

Go to Go4Schools.com and click on the **Students login** option



Starter version Modules MIS Engage/CPD

Login

Contact us

Schools login

Students login

Parents login

Governors login

MAT login

GO 4 Schools would like to place cookies on your computer to help us make this site work better. To find out more about the cookies, see our [privacy policy](#).

I accept cookies from this site. [Continue](#)

## Welcome to GO 4 Schools

Your school can make better decisions with information that is accurate, up to date, complete, at the right level of detail – and at your fingertips.

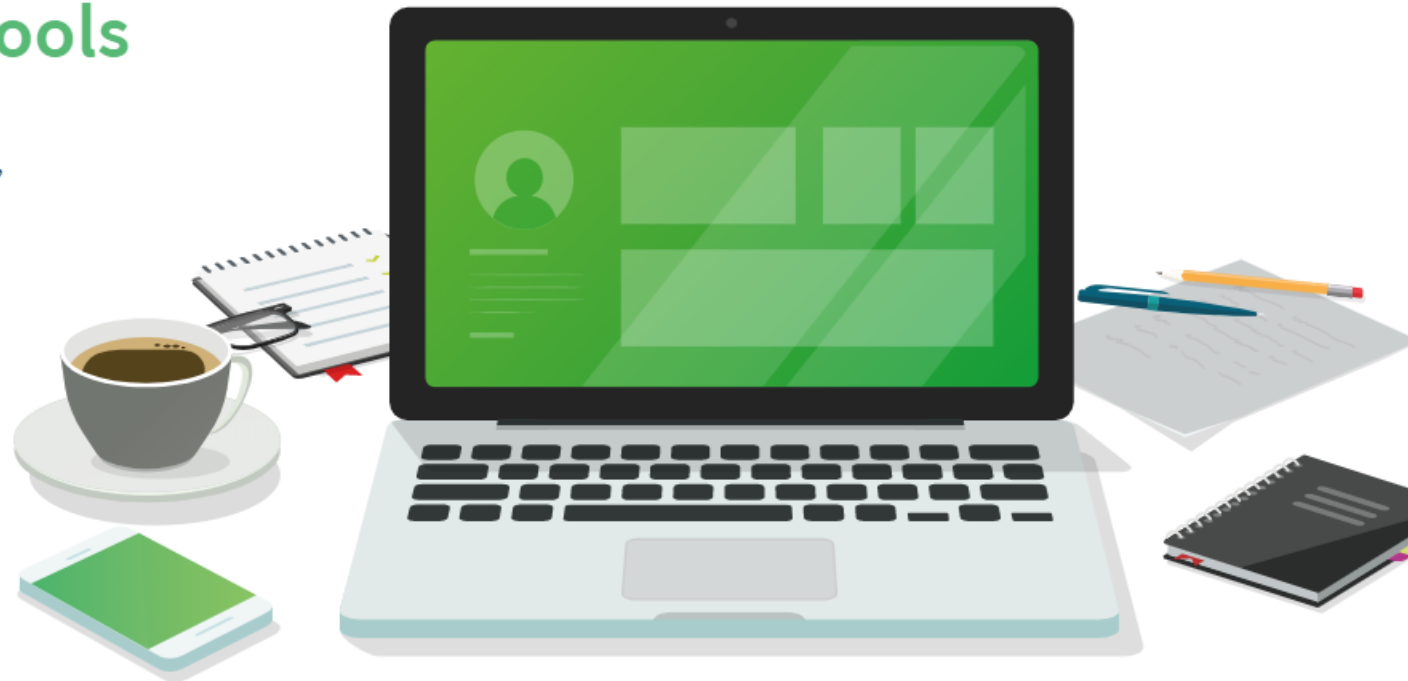
**GO 4 Schools** helps you achieve this.

It's the efficient, joined-up,

**smart** way to work.

Find out how we are helping schools:

- **Teacher assessed grades**
- **COVID-19 strategies**



## Welcome!

### This is the GO 4 Schools login page for Students

In order to login, you will need to use the email address that your school holds for you.

If you don't have a password yet, or have forgotten your password, you can request a password reset email using the [First-time User?](#) and [Forgotten your Password?](#) links.

**If you are having problems logging on, please contact your school.**

**Important notice about Microsoft Internet Explorer 11**

### GO 4 Schools Student App

If your school uses GO 4 Schools, they can add the GO 4 Schools mobile app to make it even easier for you to see your timetable, homework, behaviour records, attendance, etc. What you will see depends on which GO 4 Schools modules your school has subscribed to. View the [Mobile App - Quick Start Guide](#) for further details.

The GO 4 Schools Student App is free for students to download from the Apple and Android App stores, but you will not be able to log in unless your school has a current GO 4 Schools subscription that includes the App, and they have granted you access. **Your school will let you know if and when they have added the App to the school's subscription.**

The App uses the same login details (email address and password) as this web site.

If you can't log in to this site, you will not be able to log in to the App. If you think you should be able to log in to this website but can't, please contact your school.



Email address:

Password:

Remember my email address

Sign in

[First-time User?](#)  
[Forgotten your Password?](#)

Don't try to use the sign in box at this stage.  
Instead, click on 'First-time User?'



# Welcome!

This is the GO 4 Schools login page for Students

In order to log in, you need to type in your email address that you used to register.

If you don't remember your password, click on the 'Forgot your password' link.

If you are having problems with your password, please contact your school.

**Important note:** For Data Protection reasons we are unable to divulge or set passwords for students ourselves.

## GO 4 Schools Student App

If your school uses GO 4 Schools, they can add the GO 4 Schools mobile app to make it even easier for you to see your timetable, homework, behaviour records, attendance, etc. What you will see depends on which GO 4 Schools modules your school has subscribed to. View the [Mobile App - Quick Start Guide](#) for further details.

Email address:

### First-time User?

If you haven't logged on to GO 4 Students before, type your email address and click the "new password" button.

Email address:

Please note, if you are having problems with your password please contact your school. For Data Protection reasons we are unable to divulge or set passwords for students ourselves.

New password

Cancel

Type your *school* email address into this box. Check that you have done so accurately.

Click on '**New password**'.

You must now log into your school email account (Office 365) where you will receive an email from Go4Schools with a link to set your new password.

The email *might* go to your 'other' or 'junk' folder, so check there as well.

## Password reset

### Change your password

Update your password in the boxes below and click the "Change" button.

New password to use to login:

Confirm new password:

Password must:

- Be at least 8 characters long
- Have not been previously used on GO 4 Schools
- Contain the following:
  - At least 1 upper case character (from A-Z)
  - At least 1 lower case character (from a-z)
  - At least 1 numerical character (from 0-9)
  - At least 1 special character (from @ # \$ , % ^ & \*)

By clicking "Agree and continue" I hereby agree to the GO 4 Schools Privacy Policy.

Agree and continue

Choose a password and enter and confirm in these two boxes.

Your new password must be at least 8 characters long, include both an UPPER CASE and lower case letter, a number and a special character, such as ! £ \$ % & \*.

Only you will know this password (no record will be on our school system), so choose something you will remember!

Click on the privacy policy agreement box, then click 'Agree and continue'.

## Welcome!

### This is the GO 4 Schools login page for Students

In order to login, you will need to use the email address that your school holds for you.

If you don't have a password yet, or have forgotten your password, you can request a password reset email using the [First-time User?](#) and [Forgotten your Password?](#) links.

**If you are having problems logging on, please contact your school.**

**Important notice about Microsoft Internet Explorer 11**

### GO 4 Schools Student App

If your school uses GO 4 Schools, they can add the GO 4 Schools mobile app to make it even easier for you to see your timetable, homework, behaviour records, attendance, etc. What you will see depends on which GO 4 Schools modules your school has subscribed to. View the [Mobile App - Quick Start Guide](#) for further details.

The GO 4 Schools Student App is free for students to download from the Apple and Android App stores, but you will not be able to log in unless your school has a current GO 4 Schools subscription that includes the App, and they have granted you access. **Your school will let you know if and when they have added the App to the school's subscription.**

The App uses the same login details (email address and password) as this web site.

If you can't log in to this site, you will not be able to log in to the App. If you think you should be able to log in to this website but can't, please contact your school.

Email address:

Password:

Remember my email address

[First-time User?](#)

[Forgotten your Password?](#)

Now you can log in using the sign in box.

You can also download the free App and sign in there!

