



FOCAL
Friends of the Community of
Adderbury Library

LIBRARY NEWSLETTER

OCTOBER 2022



NEWS

Meet The Author
Calendar Photography Competition
FOCAL Vacancies

**We would like to thank everyone who enrolled in this year's Gadgeteers
Summer Reading Challenge**

REMINDERS

Meeting Room for Hire
Rhyme Time
Village Coffee Morning
Home Library Service

LIBRARY OPENING HOURS

MON - CLOSED
TUE - 10AM-1PM, 2PM-5PM
WED - CLOSED
THU - 4PM-7PM
FRI - 10AM-1PM, 2PM-5PM
SAT - 9:30AM-1PM
SUN - CLOSED

*For additional information on any of the events in this newsletter, please email
dibafr@adderburyfocal.org.uk*

<https://adderburyfocal.org.uk/>



Meet the Author

LINDA NEWBERY

Monday 24th October
DOORS 19:15 | START 19:30
Church House, Adderbury



Having wanted to be an author from the age of eight, Linda Newbery has published books for a wide range of ages – winning awards and being shortlisted for her work.

Local author Linda will talk about her life in writing, read short extracts from some of her books, and answer questions in a free-ranging discussion.

Author of award-winning novels *Set in Stone*, *Quarter Past Two on a Wednesday Afternoon* and *This Book is Cruelty Free - Animals and Us*

TICKET: £8
Available online and at Adderbury
Library
DRINKS BAR

FOR ADDITIONAL INFORMATION ON THIS EVENT, PLEASE
SCAN THE QR CODE TO ACCESS OUR WEBSITE

<https://www.adderburyfocal.org.uk>



Meet the Author

DAVID HINGLEY

Author of Birthright, Puritan and Traitor

Thursday 10th November
DOORS 19:30 | START 19:45
Church House, Adderbury

Talk & Discussion! Creating historical crime and characters; weaving historical events into fiction; how the local area is brought into aspects of the novels.



TICKET: £8

Available online and at Adderbury Library

DRINKS BAR

FOR ADDITIONAL INFORMATION ON THIS EVENT,
PLEASE SCAN THE QR CODE TO ACCESS OUR
WEBSITE

<https://www.adderburyfocal.org.uk>





FOCAL

Friends of the Community of
Adderbury Library

VOLUNTEERS

WE NEED YOU

FOCAL is a small voluntary group which supports Adderbury Library and raises funds to pay for 50% of the library opening hours.

We need more people to join our team so we can work to keep our library open.

PR LEAD

- Work closely with the Chairperson
- Write monthly library updates for newsletter and local magazines
- Design posters for events

Ability to prepare Word documents and send emails is essential. The role will require about 5 hrs work per month.

COMMITTEE MEMBERS

- Help with organising fundraising events
- Discussions and input of FOCAL events
- Regular meetings once a month

Help promote the role of FOCAL on social media.

FOCAL meet once a month on a Saturday morning.
The opportunity exists to become fully involved with the fundraising activities if you are interested but this is not essential.

To have a chat about these roles and the working of FOCAL please

contact LIZ WINGROVE our Chairperson

Email: lizwingroves5@googlemail.com

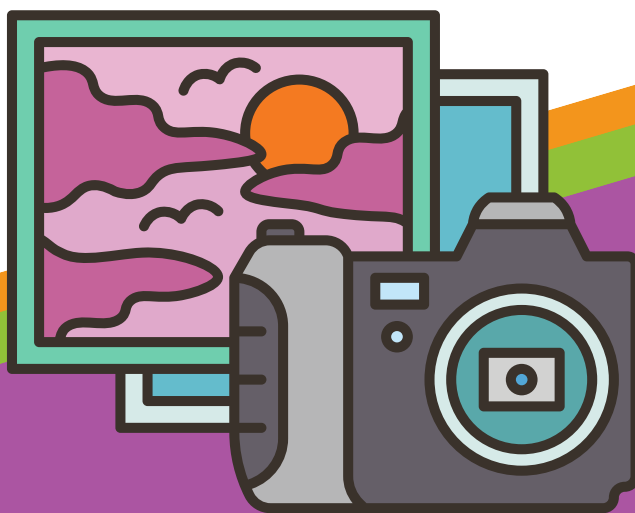
Call: 07901 776088



FOCAL

Friends of the Community of
Adderbury Library

2024 Village Calendar Photography Competition



Collect your village photographs and send them to FOCAL. Started on the 1st of August 2022, the competition runs for 12 months and winning photos will be used in the 2024 Adderbury Calendar.

Please ensure photos are 300dpi and send them to
photos@adderburyfocal.org.uk

FOR MORE DETAILS, CHECK
www.adderburyfocal.org.uk
Or call Liz on 07901776088

LIBRARY NEWSLETTER

OCTOBER 2022

Meeting Room for Hire

Church House has a meeting room for hire, for more info contact churchhouseadderbury@gmail.com

Village Coffee Mornings

Fridays 10:00-12:00, join us for coffee and cake at the library. Until September, proceeds will be donated to support Ukraine.

Rhyme Time

Thursday mornings during term time. Suitable for children aged 0-4 years. Singing in the library from 10:00-10:30 followed by coffee and chat for adults until 11:00. Suggested donation of £2 for one adult and one child. Additional children £1.
All welcome.

Home Library Service

Have books delivered to your home free of charge, and there is no charge for requests or late returns. For more info, inquire in the library or call the home library service on 01865 810259 or email homelibraryservice@oxfordshire.gov.uk

THANK YOU FOR YOUR CONTINUED SUPPORT FOR OUR LIBRARY

We are grateful to all those members and patrons who have continued to support the library. If you would like to add your support, you can do so through **Amazon Smile** and our **FOCAL 100 Club**.

Join the **FOCAL 100 Club** to be entered into a monthly draw and stand a chance to win 25% of that month's subscriptions - the bigger the membership, the bigger the prize!

Enrolment forms to join can be downloaded from our website or using the QR code
<https://adderburyfocal.org.uk>

